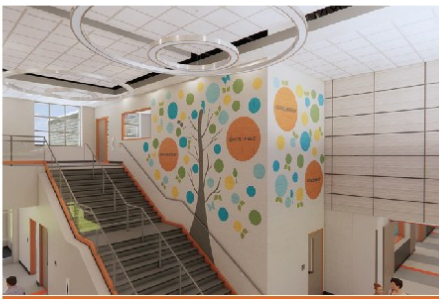


# CONSTRUCTION UPDATE

## NEW NORTH OLMSTED PK-5 SCHOOL AND RELATED PROJECTS



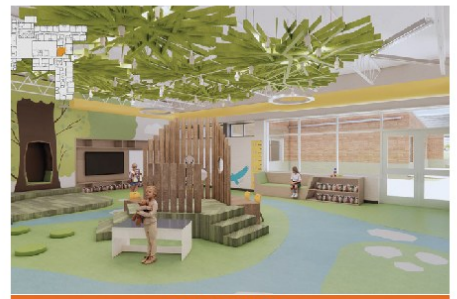
April 2026



Main Entrance



Primary Entrance



Kindergarten ELA



EXPERIENCED • DEPENDABLE • RESOURCEFUL

5802 Akron-Cleveland Road, Hudson, Ohio 44236 • (330) 656-9353





## TABLE OF CONTENTS

<b>3</b>	<b>EXECUTIVE SUMMARY</b>
<b>4-14</b>	<b>PROJECT SUMMARY / PHOTOS</b>
<b>15</b>	<b>COST SUMMARY</b>
<b>16-19</b>	<b>CONTINGENCY RECONCILIATION</b>
<b>20-21</b>	<b>CONSTRUCTION SCHEDULE</b>



## EXECUTIVE SUMMARY

In April 2026, progress has continued across all units with major interior and exterior work advancing. Unit A & B first and second floor door installation has begun. Lighting install has continued, with the installation of soffits and ceiling grid in the B Corridor. Window installation is complete in these areas. Unit C admin area has been framed, with all MEP and Electrical rough-in installed. MEP rough-in continues in the Cafeteria area. Admin and Cafeteria roofing continues. Unit D grid installation, technology and electrical devicing in progress. Unit E drywall finishing in progress. Overall, the project continues to advance steadily across all areas and major installations underway.



## PROJECT SUMMARY

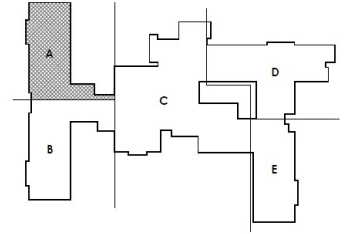
### Unit A

#### April 2026 Progress

- Exterior Windows– In progress
- Tech Pathways– Completed
- Tech Devices-In Progress
- Lights and Devices - In Progress
- Grid Installation-In Progress
- Restroom Tile Install-In-progress

#### Upcoming Progress

- Exterior Windows
- Tech Cabling
- Lights and Devices



*Classrooms*



*Classroom Doors*

**PROJECT SUMMARY**

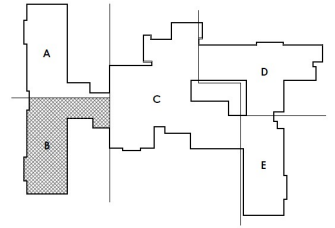
**Unit B**

**April 2026 Progress**

- Exterior Windows— In progress
- Air Handling Unit Assembly—In Progress
- Curtainwall Installation— In Progress
- South Brick Veneer-Complete
- Group Bathroom Tile-In Progress
- Tech Cabling & Devices-In Progress

**Upcoming Progress**

- Exterior Windows
- South Brick Veneer
- Curtainwall Installation



*Fourth Grade Wing Corridor*



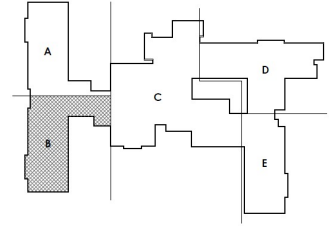
*South Side Veneer Progress*



*Fifth Grade Classroom Progress*

## PROJECT SUMMARY

### Unit B



*Group Restroom Wall Tile*

*Fourth Grade Wing—Grid, Lights & Devices*



*B-204 Corridor-Frames Painted, Walls Primed*

## PROJECT SUMMARY

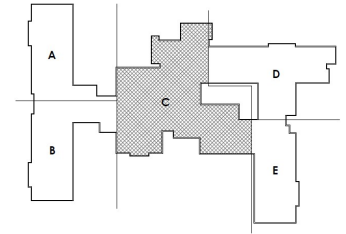
### Unit C

#### April 2026 Progress

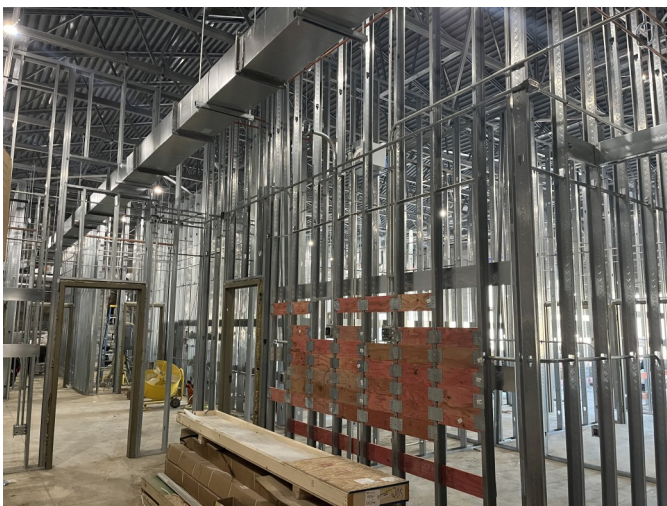
- MEP Overhead Installation— In Progress
- MEP Rough-in— In Progress
- Admin Roofing Installation—In Progress
- Community Center Roofing—In Progress
- Admin & Cafeteria Roof-In Progress

#### Upcoming Progress

- Admin Interior Wall Framing
- MEP Rough-in
- MEP Overhead Installation



*Dining Progress*



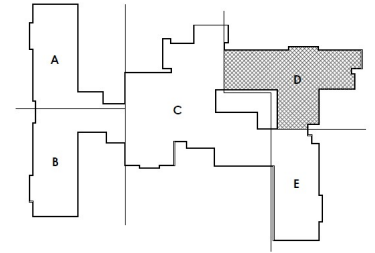
*Admin*



*Admin Veneer*

## PROJECT SUMMARY

### Unit C



*Community Room Exterior*



*Music Room Progress*

## PROJECT SUMMARY

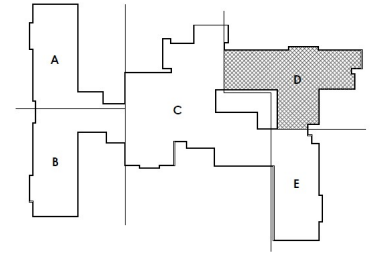
### Unit D

#### April 2026 Progress

- Overhead MEP Installation– In Progress
- Exterior Windows– In Progress
- Wall Finishes-Complete
- Prime & First Coat-Complete

#### Upcoming Progress

- Overhead MEP Installation
- MEP Rough-in
- Fire Protection Rough-in
- Exterior Windows



*North End Classroom Progress*



*E-001 Entrance*

## PROJECT SUMMARY

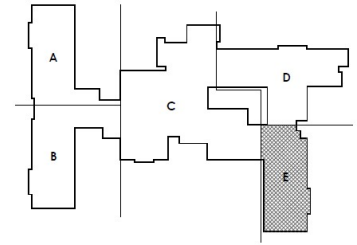
### Unit E

#### April 2026 Progress

- MEP Overhead Installation– In Progress
- MEP Rough-in– Complete
- Drywall Install and Finish-In Progress
- Roof Finishes– Complete

#### Upcoming Progress

- Interior Wall Metal Framing
- Hang Wall Board
- MEP Overhead Installation
- MEP Rough-in
- Brick Veneer
- Roof Finishes



*Corridor Soffits*



*South Wing Classroom Progress*



North Olmsted PK-5

**Construction Schedule**

Activity Name	Orig Dur	% Comp	Start	Finish	2025												2026												2027											
					S	N	O	J	H	M	A	J	J	A	S	S	N	O	J	H	M	A	J	J	A	S	S	N	O	J	H	M	A	J	J	A	S			
<b>North Olmsted City Schools - PK-5 School</b>	730	53.7%	09-24-24 A	07-30-27	[Gantt chart bars and milestones]																																			
<b>Construction</b>	730	53.7%	09-24-24 A	07-30-27	[Gantt chart bars and milestones]																																			
<b>GMP 3 Building</b>	730	53.7%	09-24-24 A	07-30-27	[Gantt chart bars and milestones]																																			
<b>Milestones</b>	104	60.87%	09-24-24 A	07-30-27	[Gantt chart bars and milestones]																																			
Construction Notice to Proceed	0	100%		09-24-24 A	[Gantt chart bars and milestones]																																			
Commence Construction	0	100%		11-11-24 A	[Gantt chart bars and milestones]																																			
Building Partial Dry-in to Start Rough-in	0	100%		09-02-25 A	[Gantt chart bars and milestones]																																			
Full Building Permanent Enclosure	0	0%		06-18-26	[Gantt chart bars and milestones]																																			
Substantial Completion	0	0%		12-09-26*	[Gantt chart bars and milestones]																																			
Final Completion	0	0%		12-23-26*	[Gantt chart bars and milestones]																																			
Owner Takes Possession	0	0%		12-24-26*	[Gantt chart bars and milestones]																																			
Phase II Site Finishes Complete	0	0%		07-30-27*	[Gantt chart bars and milestones]																																			
<b>Site Mobilization</b>	44	100%	09-24-24 A	10-28-24 A	[Gantt chart bars and milestones]																																			
<b>Material Procurement</b>	230	100%	09-24-24 A	07-08-25 A	[Gantt chart bars and milestones]																																			
<b>Foundations</b>	40	100%	09-24-24 A	11-18-24 A	[Gantt chart bars and milestones]																																			
<b>Precast Plank</b>	85	100%	09-24-24 A	04-07-25 A	[Gantt chart bars and milestones]																																			
<b>Structural Steel</b>	115	100%	09-24-24 A	06-25-25 A	[Gantt chart bars and milestones]																																			
<b>HVAC Equipment</b>	230	100%	09-24-24 A	07-08-25 A	[Gantt chart bars and milestones]																																			
<b>Electrical Gear</b>	230	100%	09-24-24 A	05-26-25 A	[Gantt chart bars and milestones]																																			
<b>Building Structure/ Shell</b>	409	87.78%	10-21-24 A	06-18-26	[Gantt chart bars and milestones]																																			
<b>Below Grade Structure/ Rough-in</b>	322	100%	10-21-24 A	02-16-26 A	[Gantt chart bars and milestones]																																			
<b>2-Story</b>	53	100%	10-21-24 A	03-19-25 A	[Gantt chart bars and milestones]																																			
Area B	39	100%	10-21-24 A	03-11-25 A	[Gantt chart bars and milestones]																																			
Area A	38	100%	11-22-24 A	03-19-25 A	[Gantt chart bars and milestones]																																			
<b>1-Story</b>	293	100%	12-04-24 A	02-16-26 A	[Gantt chart bars and milestones]																																			
Area C (Gyms)	188	100%	12-04-24 A	07-24-25 A	[Gantt chart bars and milestones]																																			
Area C (Admin/ Community)	37	100%	01-03-25 A	04-04-25 A	[Gantt chart bars and milestones]																																			
Area C (Kitchen/ Serving)	54	100%	01-13-25 A	04-09-25 A	[Gantt chart bars and milestones]																																			
Area C (Main Cafeteria)	280	100%	01-13-25 A	02-16-26 A	[Gantt chart bars and milestones]																																			
Area D	69	100%	01-27-25 A	05-23-25 A	[Gantt chart bars and milestones]																																			
Area E	71	100%	02-03-25 A	06-09-25 A	[Gantt chart bars and milestones]																																			
<b>Above Grade Structure/ Dry-in</b>	314	94.43%	12-27-24 A	05-04-26	[Gantt chart bars and milestones]																																			
<b>2-Story</b>	180	100%	12-27-24 A	11-04-25 A	[Gantt chart bars and milestones]																																			
Area B	173	100%	12-27-24 A	11-03-25 A	[Gantt chart bars and milestones]																																			
Area A	134	100%	02-04-25 A	11-04-25 A	[Gantt chart bars and milestones]																																			
<b>1-Story</b>	216	92.82%	02-14-25 A	05-04-26	[Gantt chart bars and milestones]																																			
Area C (Gyms)	147	100%	02-14-25 A	10-10-25 A	[Gantt chart bars and milestones]																																			
Area C (Kitchen/ Serving)	85	100%	05-15-25 A	11-06-25 A	[Gantt chart bars and milestones]																																			
Area D	102	100%	06-10-25 A	12-10-25 A	[Gantt chart bars and milestones]																																			
Area E	105	100%	06-03-25 A	12-10-25 A	[Gantt chart bars and milestones]																																			
Area C (Admin/ Community)	115	93.48%	04-11-25 A	04-21-26	[Gantt chart bars and milestones]																																			
Area C (Main Cafeteria)	60	79.27%	11-17-25 A	05-04-26	[Gantt chart bars and milestones]																																			
<b>Shell Enclosure/ Finishes</b>	178	76.4%	06-13-25 A	06-18-26	[Gantt chart bars and milestones]																																			
<b>2-Story</b>	105	90.48%	06-13-25 A	04-24-26	[Gantt chart bars and milestones]																																			
Area B	72	97.22%	06-13-25 A	04-10-26	[Gantt chart bars and milestones]																																			
Area A	63	87.3%	07-01-25 A	04-24-26	[Gantt chart bars and milestones]																																			
<b>1-Story</b>	172	75.58%	06-13-25 A	06-18-26	[Gantt chart bars and milestones]																																			

